

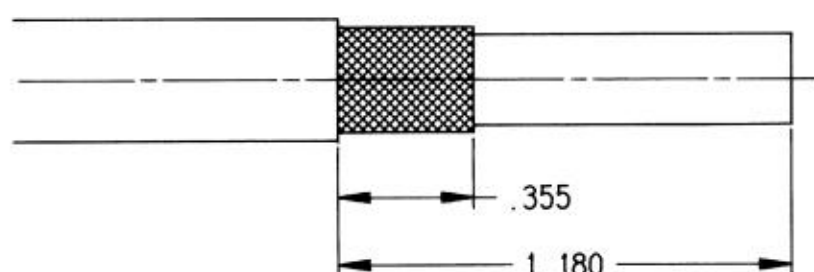


TITLE : T-CAS _ SIZE 1 RF CONTACT _ WIRING INSTRUCTIONS
FOR ASN-E 0406 WD , ECS 311201 , RG 214 , BA 6903 A ,
TIMES AA 5887 AND TIMES AA 5886 CABLE

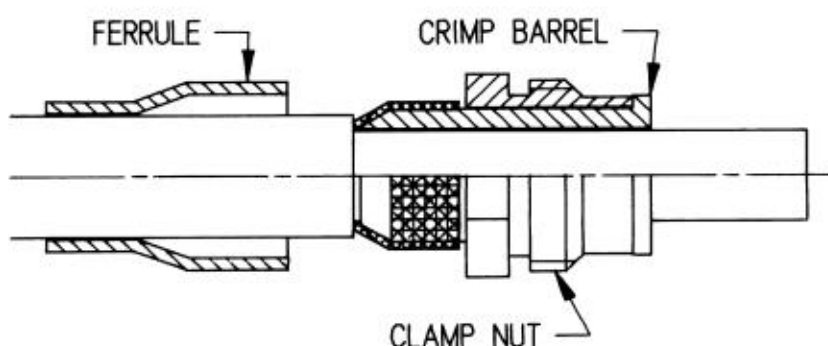
SERIE : NSX

PEN : _____

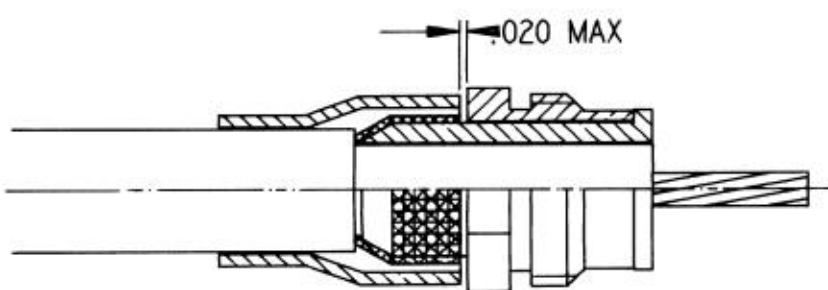
THIS DOCUMENT WAS CREATED BY CAD.IT CANNOT BE MODIFIED EXCEPT BY CAD.



STEP 1
STRIP CABLE JACKET TO DIMENSIONS SHOWN



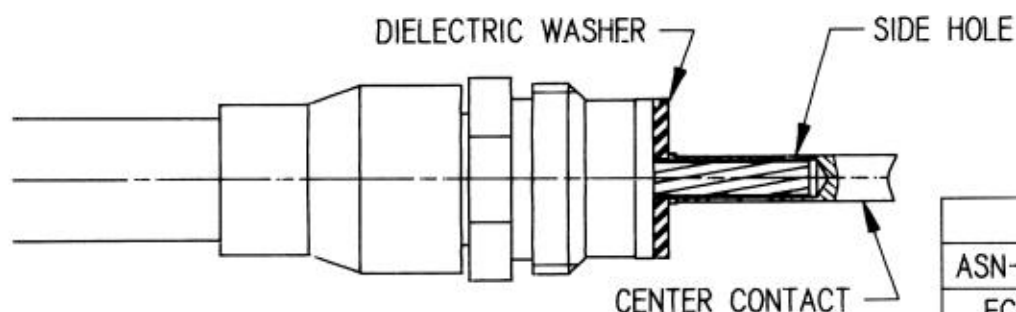
STEP 2
SLIDE FERRULE OVER THE CABLE
FLARE BRAID
SLIDE CRIMP BARREL FITTED WITH CLAMP NUT OVER DIELECTRIC AND PLACE BRAID ON KNURLED AREA



STEP 3
SLIDE FERRULE OVER BRAID MAINTENING A GAP BETWEEN FERRULE AND CLAMP NUT. CRIMP FERRULE USING:

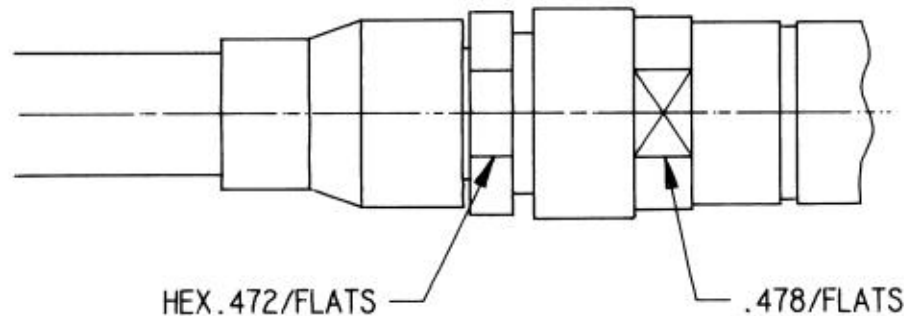
CABLE	CRIMPING TOOL	DIE
ASN-E 0406 WD	M22520/5-01	M22520/5-61
ECS 311201		M22520/5-61
RG 214		M22520/5-61
BA 6903 A		M22520/5-61
TIMES AA5887		M22520/5-29 HEX A
TIMES AA5886		M22520/5-61

BE SURE THAT CLAMP NUT REMAINS TO ROTATE THEN TRIM DIELECTRIC



STEP 4
SLIDE DIELECTRIC WASHER OVER CENTER CONDUCTOR THEN CENTER CONTACT. CRIMP CENTER CONTACT USING:

CABLE	CRIMPING TOOL/SELECTOR	POSITIONER/TURRET
ASN-E 0406 WD	M22520/1-01 SEL 8	M22520/1-13 GREEN
ECS 311201		M22520/1-13 GREEN
RG 214		M22520/1-13 GREEN
BA 6903 A		M22520/1-13 GREEN
TIMES AA5887		M22520/1-13 RED
TIMES AA5886		M22520/1-02 BLUE



STEP 5
INTRODUCE THE CABLE INTO THE OUTER CONTACT SCREW AND TIGHTEN THE CLAMP NUT WITH 10-15 IN-LBS TORQUE

B	REDRAWN		7.15.91	LF
IND	MODIFICATIONS		DATE	VISA
Creation	Date: 12.1.89	This information is given as an indication. In the continual goal to better our products, we reserve the right to bring any modifications judged necessary.	 101, rue Philibert Hoffmann, Z.I. Ouest 93116 ROSNY/BOIS Cedex (France) Tél.: (1) 49 35 35 35 Fax.: (1) 48 54 63 63 Télex: RADIA 235220	
Up-date	Date: _____			